

PERIMETER

SURVEYING & MAPPING
 Certificate of Authorization No. LB7264
 Prepared by: Jeff S. Hodapp, P.S.M.
 947 Clint Moore Road
 Boca Raton, Florida 33487
 Tel: (561) 241-9988
 Fax: (561) 241-5182

LEGEND:

- SET P.R.M. (UNLESS OTHERWISE NOTED) - 4" X 4" CONC. MON. WITH ALUMINUM DISK STAMPED P.R.M. • LB7264 P.C.P.
- CENTERLINE

ABBREVIATIONS:

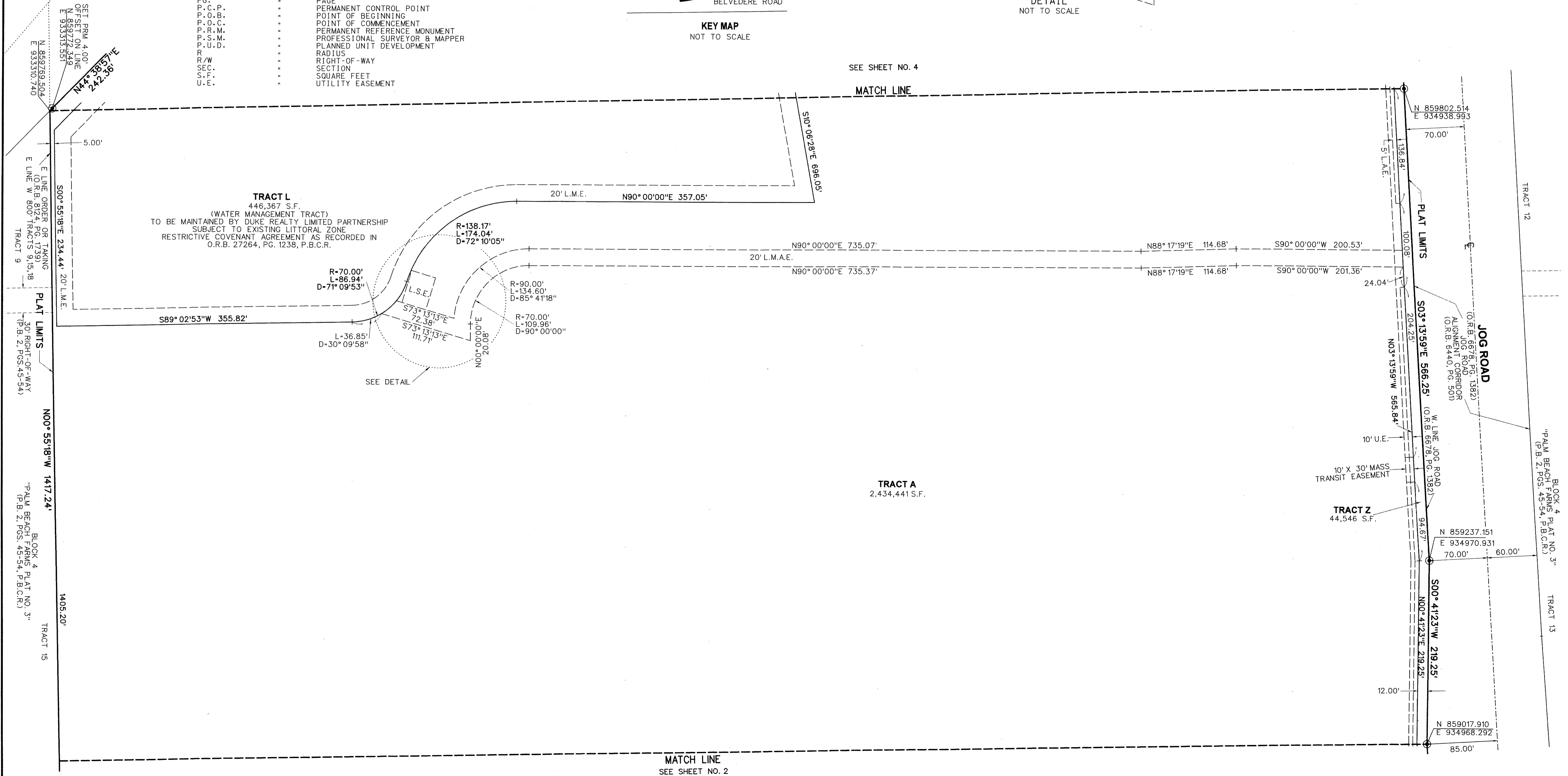
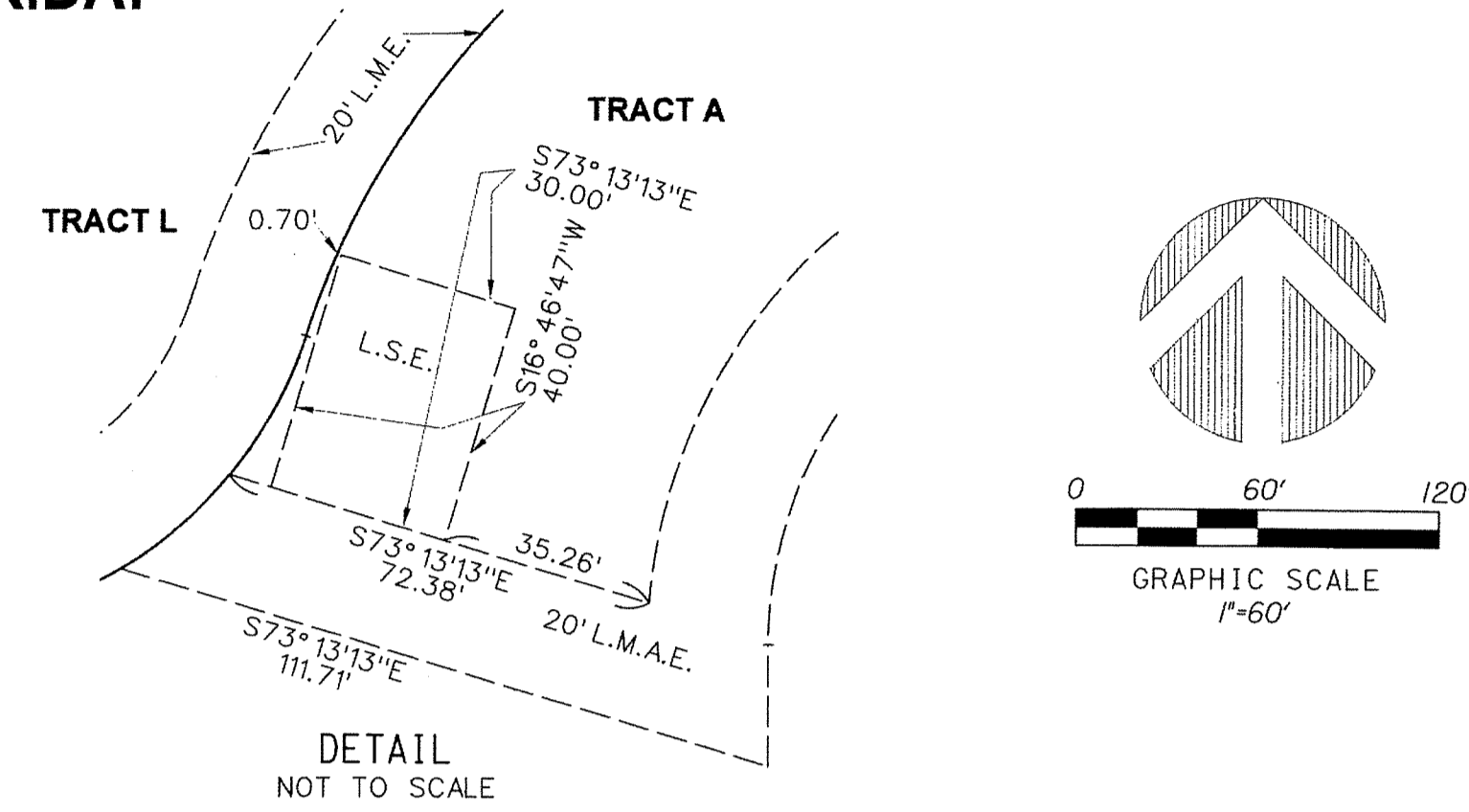
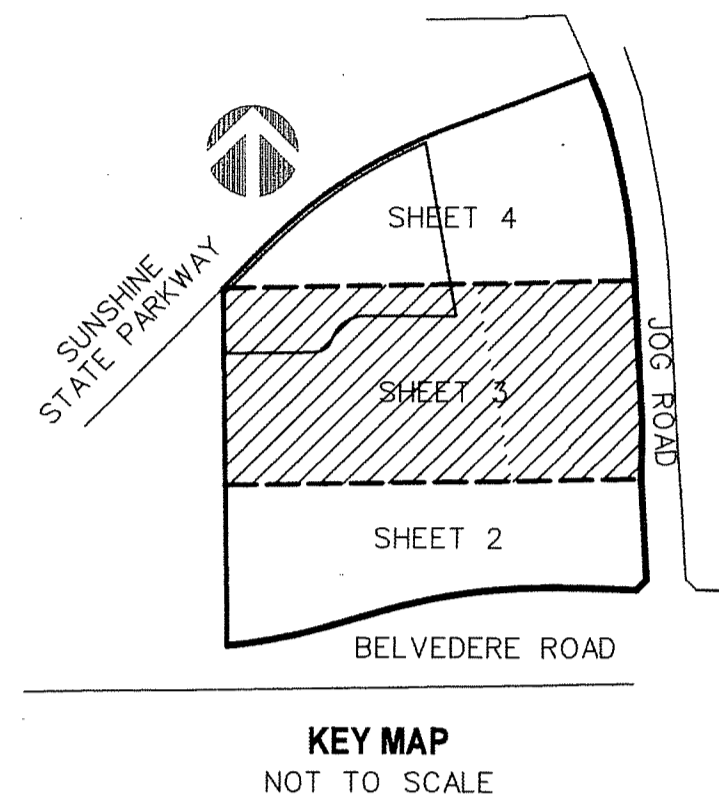
- | | |
|------------|--|
| CH | CHORD |
| CHB | CHORD BEARING |
| CONC. | CONCRETE |
| COR. | CORNER |
| D | DELTA (CENTRAL ANGLE) |
| D.E. | DRAINAGE EASEMENT |
| L | ARC LENGTH |
| L.B. | LICENSED BUSINESS |
| L.E. | LANDSCAPE EASEMENT |
| L.M.E. | LAKE MAINTENANCE EASEMENT |
| L.M.A.E. | LAKE MAINTENANCE ACCESS EASEMENT |
| L.S. | LICENSED SURVEYOR |
| L.S.E. | LIFT STATION EASEMENT |
| L.W.D.D. | LAKE WORTH DRAINAGE DISTRICT |
| MON. | MONUMENT |
| O.R.B. | OFFICIAL RECORDS BOOK |
| N.R. | NON-RADIAL |
| P.B. | PLAT BOOK |
| P.B.C.E.D. | PALM BEACH COUNTY ENGINEERING DEPARTMENT |
| P.B.C.R. | PALM BEACH COUNTY RECORDS |
| P.B.C.U.E. | PALM BEACH COUNTY UTILITY EASEMENT |
| PG. | PAGE |
| P.C.P. | PERMANENT CONTROL POINT |
| P.O.B. | POINT OF BEGINNING |
| P.O.C. | POINT OF COMMENCEMENT |
| P.R.M. | PERMANENT REFERENCE MONUMENT |
| P.S.M. | PROFESSIONAL SURVEYOR & MAPPER |
| P.U.D. | PLANNED UNIT DEVELOPMENT |
| R | RADIUS |
| R/W | RIGHT-OF-WAY |
| SEC. | SECTION |
| S.F. | SQUARE FEET |
| U.E. | UTILITY EASEMENT |

TURNPIKE CROSSING EAST

A REPLAT OF ALL OF TRACTS 11 & 14, AND A PORTION OF TRACTS 7-9, 12, 13, 15, & 18-20, ALL IN BLOCK 4, TOGETHER WITH A PORTION OF 30 FOOT RIGHTS-OF-WAY ADJACENT THERETO, ALL OF "PALM BEACH FARMS COMPANY PLAT NO. 3" (P.B. 2, PGS. 45-54, P.B.C.R.), IN SECTIONS 27 & 34, TOWNSHIP 43 SOUTH, RANGE 42 EAST, PALM BEACH COUNTY, FLORIDA.

98

SHEET 3 OF 4



MATCH LINE
SEE SHEET NO. 2

SEE SHEET NO. 4

MATCH LINE

TRACT A
2,434,441 S.F.

TRACT Z
44,546 S.F.

PLAT LIMITS
30' RIGHT-OF-WAY
(P.B. 2, PGS. 45-54)

NO0° 55' 18" W 1417.24'

BLOCK 4
PALM BEACH FARMS PLAT NO. 3
(P.B. 2, PGS. 45-54, P.B.C.R.)

TRACT 15

BLOCK 4 PLAT NO. 3
PALM BEACH FARMS, P.B.C.R.
(P.B. 2, PGS. 45-54, P.B.C.R.)

TRACT 13

TRACT 12

JOG ROAD

10' X 30' MASS TRANSIT EASEMENT

W LINE JOG ROAD
N03° 13' 59" W 566.25'
N03° 13' 59" W 565.84'

N 859017.910
E 934968.292

85.00'

N 859237.151
E 934970.931
70.00'

60.00'

N 859802.514
E 934938.993

70.00'

N 859789.504
E 933310.740

5.00'

PLAT LIMITS
136.84'
100.08'

N03° 13' 59" W 566.25'

N03° 13' 59" W 565.84'

204.25'

204.25'

204.25'

204.25'

204.25'

204.25'

204.25'

204.25'

204.25'

204.25'

204.25'

204.25'

204.25'

204.25'

204.25'

204.25'

204.25'

204.25'

204.25'

204.25'

204.25'

204.25'

204.25'

204.25'

204.25'

204.25'

204.25'

204.25'

204.25'

204.25'

204.25'

204.25'

204.25'

204.25'

204.25'

204.25'

204.25'

204.25'

204.25'